

ExCell Bio

Fetal Bovine Serum



Traceability of Origin

ExCell Fetal Bovine Serum is derived from clotted whole blood aseptically collected from fetus via cardiac puncture. Each manufactured batch record is rigorously controlled, from the collection of donor source, slaughterhouse and throughout all stages of its treatment and production through to final packaging on our premises.

Global Distribution

- Global origin -Australia, New Zealand, Uruguay, Brazil, China.
- Self-produced serum with stable supplying chain to worldwide.

Manufacturing

- Triple 0.1µm filtration.
- ISO 9001 and GMP facilities.

Quality Testing and Assurance

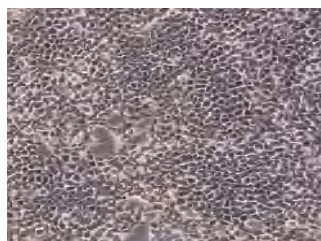
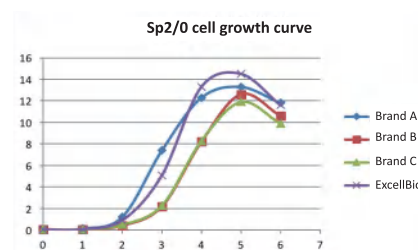
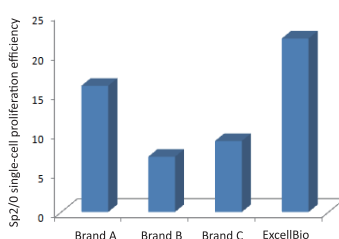
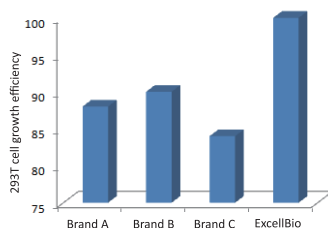
- The quality of our products starts with the sourcing of raw material, which is only collected from registered export abattoirs under the supervision of Government Veterinary authorities and subjected to strict quality controls.
- Quality specification test is referred to USP, EP and ChP standard, to make the serum is consistent, highest-performing.

Reasons to choose ExCell Bio FBS

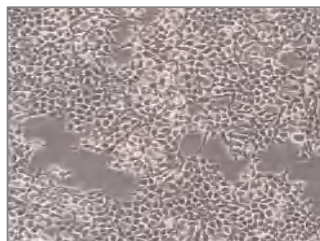
- ExCell Bio is the member of ISIA
- Global origin and manufacturing
- Strictest aseptic collection
- Maternal traceability
- Up to 49 quality specification tests per batch
- >1000 citations and counting
- Used by 10,000+ customers

Strict quality control standards

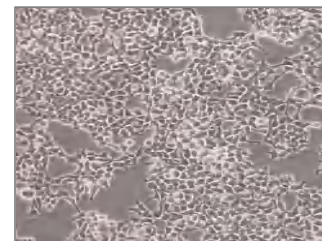
- Double quality checks before being released to the market
- Biochemical parameters & microbiology test
- No virus of BVD, PI3, IBR, RABV, BAV, BPV, REOV, BRSV, BTV bovine disease
- Performance test for SP2/0, 293T, CHO, MRC-5, Vero, A549 cell culture



ExCellBio



Brand A



Brand B

Product information

Contact your local sales representative or distributor for more product information

| Cat No. | Product Name | Origin | Size |
|---------|-------------------------------------|----------------|--------|
| FSD500 | Fetal Bovine Serum(Defined) | Uruguay/Brazil | 500 mL |
| FSP500 | Fetal Bovine Serum (Prime) | Uruguay/Brazil | 500 mL |
| FCS500 | Fetal Bovine Serum(Standard) | China | 500 mL |
| NCO500 | New-born Calf Serum (Characterized) | China | 500 mL |

